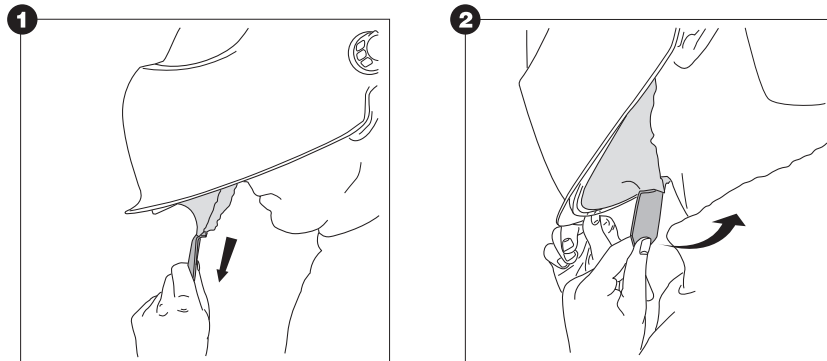
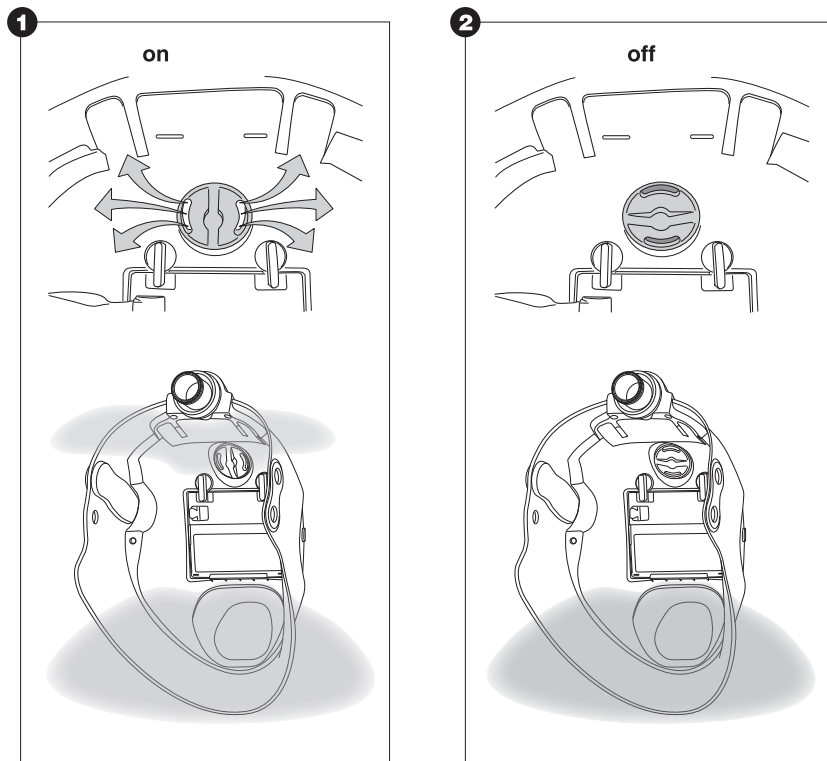


Positioning of the head and face seal e600 series & OSE



Air distribution control e600 series & OSE



Welding helmet e600 series & OSE for use with respiratory protective equipment



- DE Bedienungsanleitung
- GB User Instructions
- FR Notice d'utilisation
- IT Istruzioni per l'uso
- ES Instrucciones para el usuario
- PT Manual de instruções
- NL Gebruiksaanwijzing
- CZ Návod k použití
- DK Brugervejledning
- SE Bruksanvisning
- FI Käyttöohje
- RU РУКОВОДСТВО ПО ЭКСПЛУАТАЦИИ

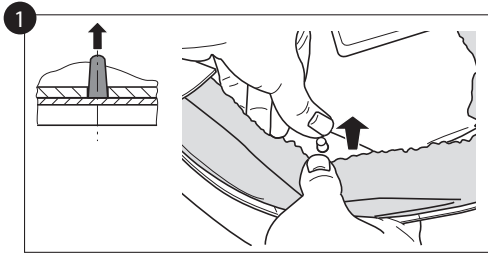
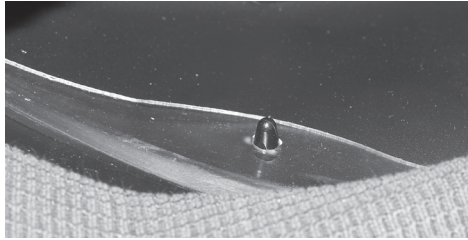
Art. No. 9610.429.04



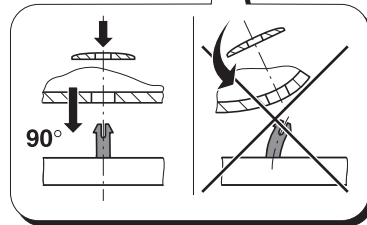
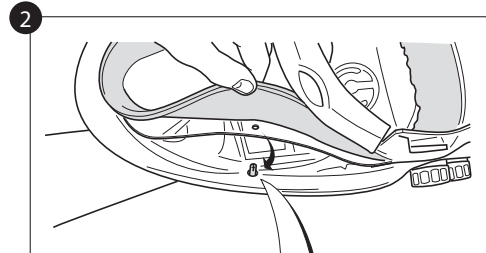
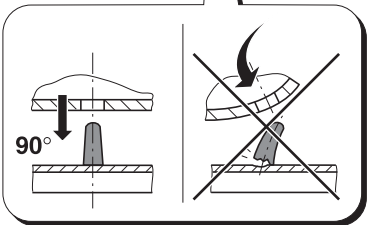
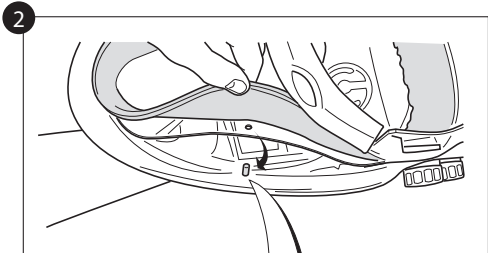
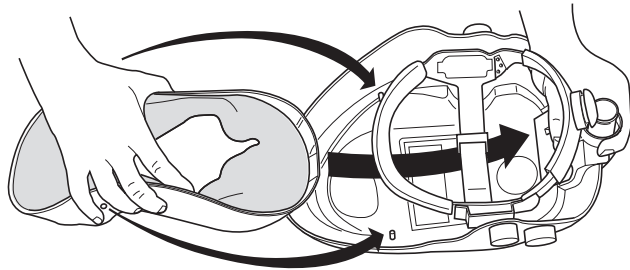
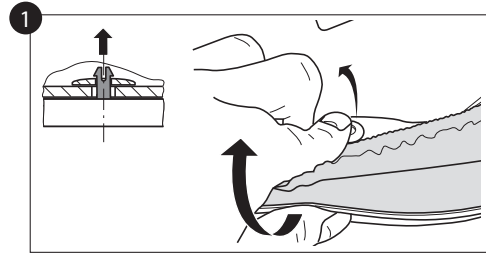
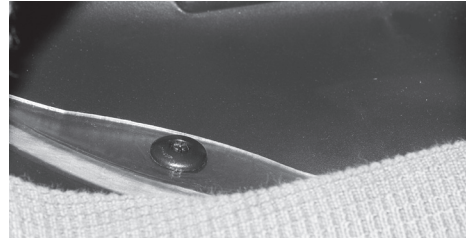
optrel ag
industriestrasse 2
ch - 9630 wattwil
phone: ++41 (0)71 987 42 00
fax: ++41 (0)71 987 42 99
info@optrel.com
www.optrel.com

Optrel e600 series & OSE face seal removal

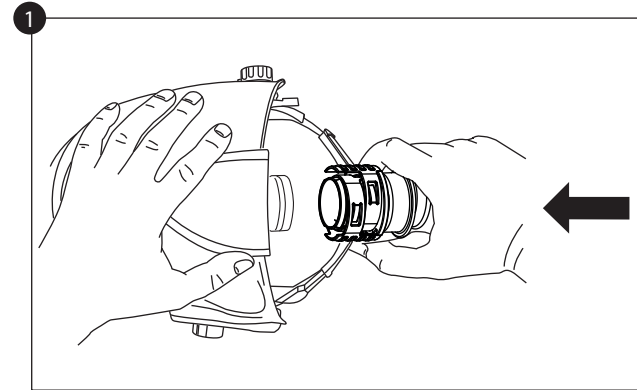
< 2007



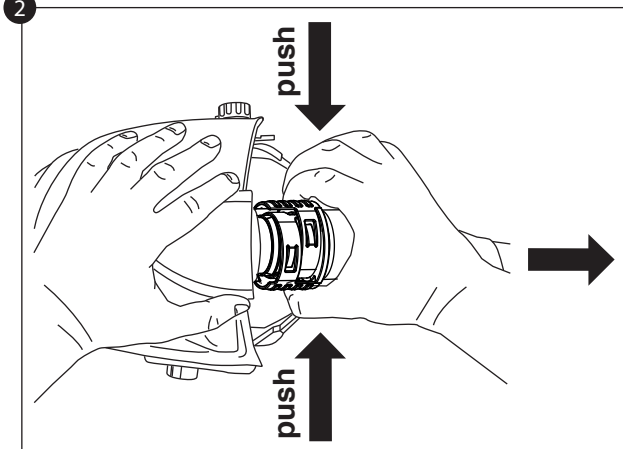
> 2007



Air hose assembly e600 series & OSE



Air hose removal e600 series & OSE



Air hose holder

